

## ***MET News – April 2011***

### ***Excellence in Medical Device Testing***

#### **Blister Tray Forming / Sealing Machine Range Expanded**

RAMAC unveiled the latest version of their tray forming / sealing machine at the Stuttgart show last month. The new machine has the same reliable design as previous models, but with a smaller footprint and the option of a manually rotated table. The original RAMAC 525 has a sealing area of 525mm x 325mm. The new machine has a sealing area of 325mm x 325mm. The new machine does retain the forming function, which dispenses with the need to stock a variety of tray sizes for production. [Click here to for more detail.](#)



#### **All New Burst Test Machine**

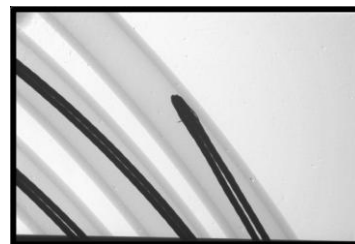


The MET packaging burst tester has been remodelled! In addition to being really easy to use, this go / no go gauge for pack seal strength testing, it is now ideal for validation. The RS232 output allows data capture and each pack test is completed in <10 seconds. Use the MiniBurst 5 in production QA and for qualification to ISO 11607. [Click here to for more detail.](#)

#### **X Ray Inspection**

Non destructive, non contact X-ray analysis of medical devices is now available. MET supply a CE marked inherently safe unit which delivers X-ray shots showing hidden details of products and inside packaging. A robot (4 axis) positions the device for examination within the test chamber and can move it or rotate it for video footage. The radiation used is low energy and is contained within the chamber with full safety interlocks. Only single phase power is required.

This system is ideal for analysis of: guide-wires and stents, product hidden within packaging, the internal components of drug delivery devices, and the mating of surfaces. It is also ideal for detecting metallic contamination.



[Click here to see more detail.](#)

#### **The Importance of Materials Analysis and Packaging in Product Development**

Two new white papers have been published by MET in MedTech Innovation. They are found on page 25 of the [March edition](#), and on page 26 of the [April edition](#). The March paper describes the need to consider packaging early in a development project. Whilst, the April missive describes the application of chemical testing to medical devices. All our white papers can be found at our [Information Library](#).

Call 08454 588924 or E-mail [solutions@met.uk.com](mailto:solutions@met.uk.com) for impartial advice and free quotations.

[www.met.uk.com](http://www.met.uk.com)